

District-wide, door-to-door, home-based
HIV voluntary counselling and testing in
Bushenyi

Data Management and Program Results

Dr. Elly Muganzi

Objectives of data management

- General

To generate information that can be used to improve program activities & also document lessons learnt

- Specific

- Generate monthly and quarterly reports
- Identify and monitor key indicators necessary for program evaluation and improvement.
- Document and disseminate good practices
- Maintain a data bank for future reference

Data management methods

- Data collected by lab assistants, counsellors, and RPMs using standardised forms.
- Double data entry done using Epi Info
- Analysis done using SPSS
- Analysis covers Jan 2005 to March 2006
- 137,023 clients are included in this analysis

Results

- From January 2005 to March 2006, 153,096 people in 46,525 households were identified as eligible for HIV-CT
- 137,023 (89.5%) were present at home and accepted pre-test counselling
- 136,865 (99.9%) accepted testing, received results, 91% of these had never tested for HIV and 82% of the repeat testers were HIV negative

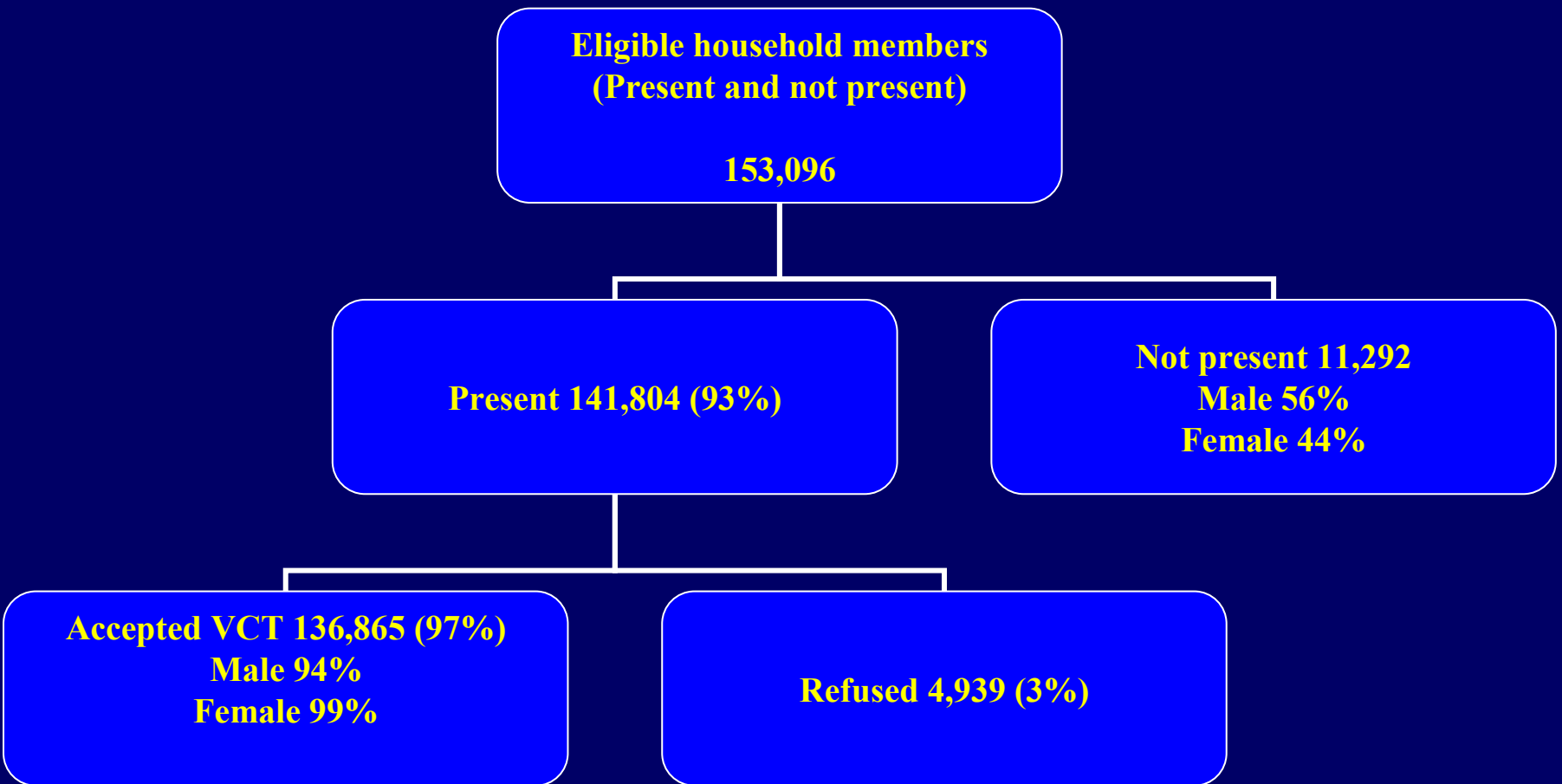
Results

No.identified eligible for HIVCT	153,059
No. present at home &accepted pre-TC	137,023(89.5%)
No. accepted testing and received results	136,865(99.9%)
No never tested before	124,953(91.3%)
Previous testers negative	9608(82.4%)

Results

- HIV CT coverage (Proportion tested divided by proportion eligible in HH- both present & absent) was 89% (85% male, 94% female).
- Overall, 7,058 (5.2%) were HIV-infected (women: 6.2%, men 4.0%, $P \leq 0.001$).
- 6,028 (85%) of these HIV positive people had not tested for HIV before.

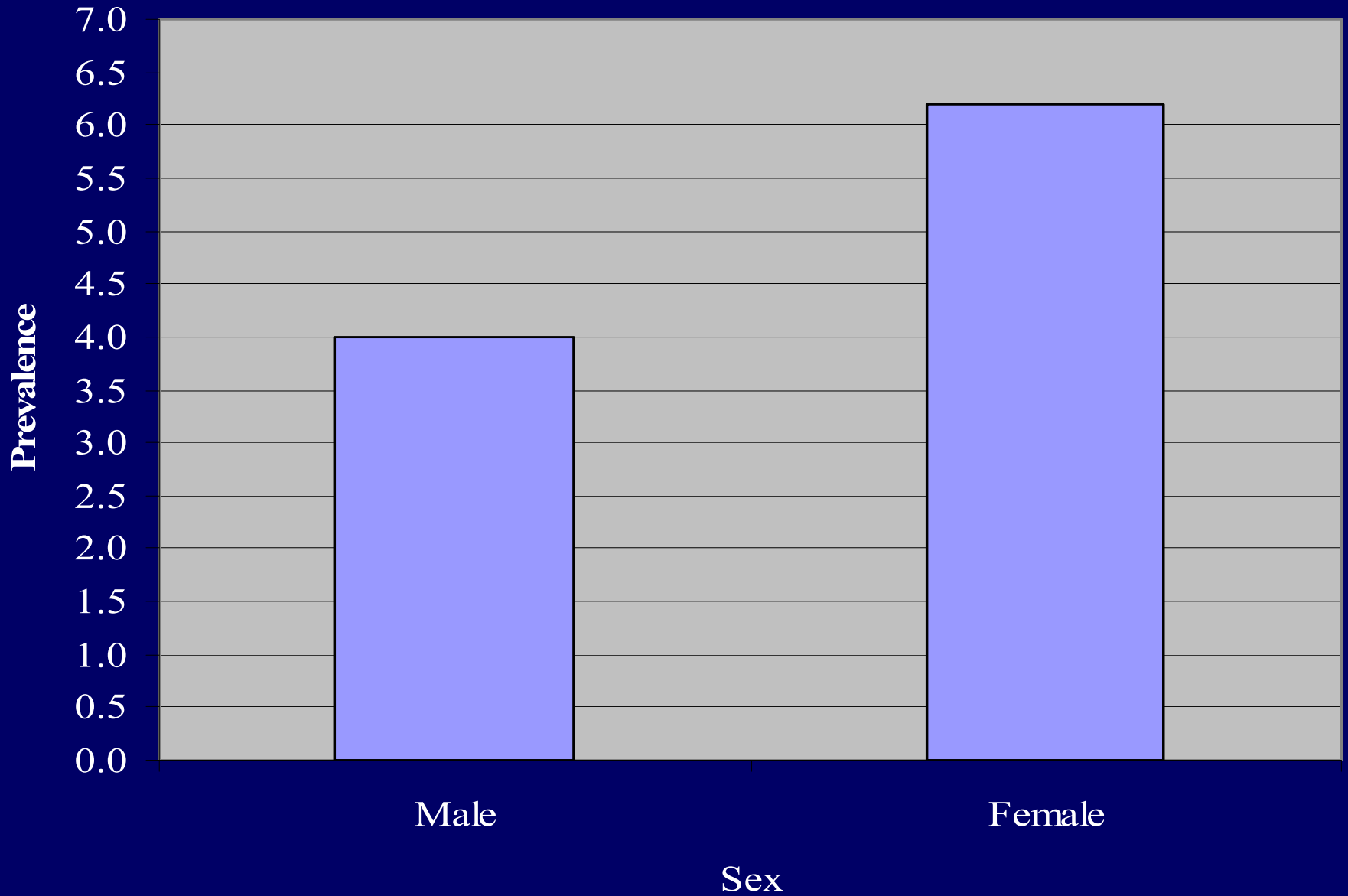
UPTAKE



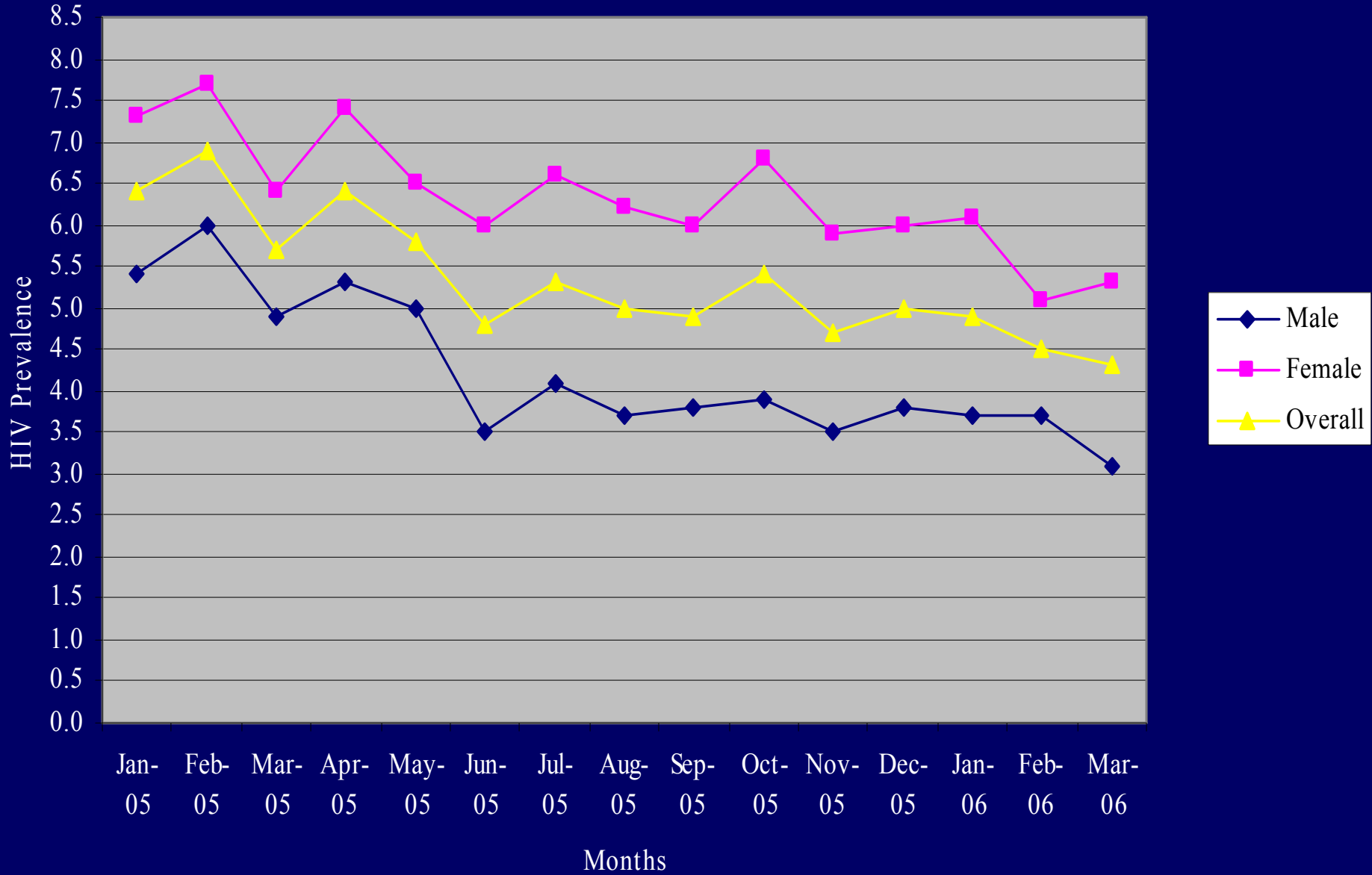
HIV Prevalence by Age

Age group	Males	Male prevalence	Females	Female prevalence	Total	Total Positive	Overall Prevalence
0-4 years	422	9.0	487	7.0	911	72	7.9
5-9 years	741	5.8	804	4.7	1547	81	5.2
10-14 years	3330	1.2	3679	1.0	7025	75	1.1
15-19 years	11296	0.4	11716	1.8	23046	256	1.1
20-24 years	11044	1.8	12094	5.4	23152	849	3.7
25-29 years	8838	4.3	10277	9.0	19130	1299	6.8
30-34 years	7227	6.8	8292	10.5	15533	1359	8.7
35-39 years	5724	7.7	6474	10.6	12205	1129	9.3
40-44 years	4422	9.0	5311	9.4	9737	895	9.2
45-49 years	3322	7.6	3651	6.5	6974	488	7.0
50-54 years	2557	5.5	3201	4.2	5759	275	4.8
55-59 years	1756	3.2	1535	2.6	3292	97	2.9
60-64 years	1749	2.5	1616	2.0	3365	77	2.3
65-69 years	1298	2.3	856	2.1	2154	48	2.2
70-74 years	904	1.4	629	1.7	1533	24	1.6
75-79 years	460	2.0	230	3.5	690	17	2.5
80+ years	459	1.3	253	1.6	712	10	1.4
N.A/Missing	30	-	38	-	100	-	-
Total	65579	4.0	71143	6.2	136865	7058	5.2

HIV Prevalence by gender



HIV Prevalence by month



HIV prevalence by marital status

Status	Tested	HIV+	%
Married/ cohabiting	77089	3727	4.8
Divorced/ Separated	5906	938	15.9
Widowed	7311	1337	18.3
Single	43523	969	2.2
Not stated	3036	87	2.9
Total	136,865	7058	5.2

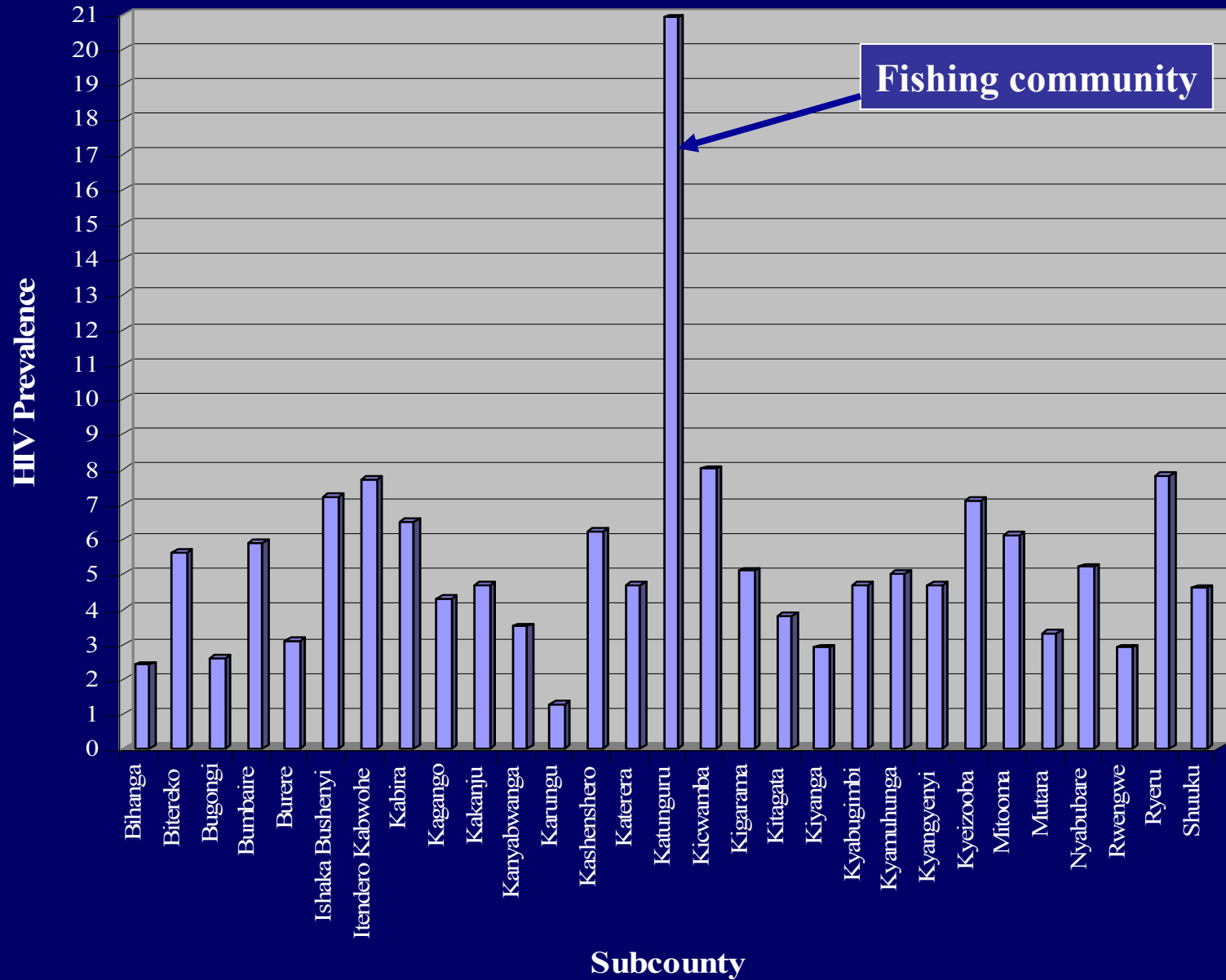
HIV prevalence by highest level of education

Highest education	Tested	HIV+	%
None	22537	1388	6.2
Lower Primary 1-4	30953	1743	5.6
Upper Primary 5-7	57499	2894	5.0
Secondary	22041	873	4.0
Post Secondary	2664	98	3.7
Others	1171	62	5.3
Total	136,865	7058	5.2

HIV prevalence by occupation

Occupation	Tested	HIV+	%
None	7323	429	5.9
Paid employee	6231	371	6.0
Peasant	60190	3531	5.9
Casual Laborer	13303	895	6.7
Housewife	23407	1319	5.6
Vendor	750	61	8.1
Student	23724	254	1.1
Business man/woman	244	26	10.7
Others	1693	172	10.2
Total	136,865	7058	5.2

HIV Prevalence by subcounty



Results cont'd

- Members of 13,855 married/cohabiting couples were counselled and tested together. For 95% of these couples, both partners were HIV negative, while for 2%, both partners were HIV positive. 3% of cohabiting couples are discordant.
- Of all HIV positive cohabiting/married persons (674 couples, 5% of all couples tested together), 372 (55%) live in HIV discordant partnerships

Conclusions

- The proportion ever having received an HIV test increased rapidly from 10% to 89% -covered areas
- Home-based HIV CT is feasible in this setting, has high uptake and supports linkage to care.
- Overwhelming majority of individuals who are HIV infected had not been tested before and did not know their HIV status
- There are more cohabiting/married partners who are discordant for HIV than there are cohabiting / married partners who are both infected thereby highlighting the unmet HIV prevention need

THANK YOU